

Smarter Infrastructure Visibility at DeVry University with Faddom

DeVry University was looking for a modern way to support change management, cloud migration, business continuity, and micro-segmentation. As **Infrastructure Manager**, Michael Ciardullo needed a platform to validate application requirements and ensure server connectivity with speed and clarity.

Organization Details

- Industry: Higher Education
- Employee Size: 5,001-10,000
- Location: Illinois, United States



With **Faddom**, DeVry University improved visibility, security, and efficiency while achieving measurable value across IT initiatives.

Rapid Deployment

Fully operational within minutes, with no complex setup.

Real-Time Mapping

Confirms application requirements and server connections instantly.

Strategic IT Visibility

Supports better planning across continuity, cloud, and change efforts.



FAST
Fully deployed within 60 min.



SECURE
No agents or credentials needed.



COST-EFFECTIVE
Pricing that makes sense for you.

Agentless Application Dependency Mapping

Faddom is an **agentless platform** that helps organizations across different industries and regions visualize their entire on-premise and cloud infrastructure as business application maps in **as little as 60 minutes**.

Be proactive and plan ahead by always having dynamic, accurate IT documentation that **updates continuously and automatically 24/7**.



Faddom does a good job of application port mapping which helps us confirm application requirements. We use it to confirm our servers have the right connections.



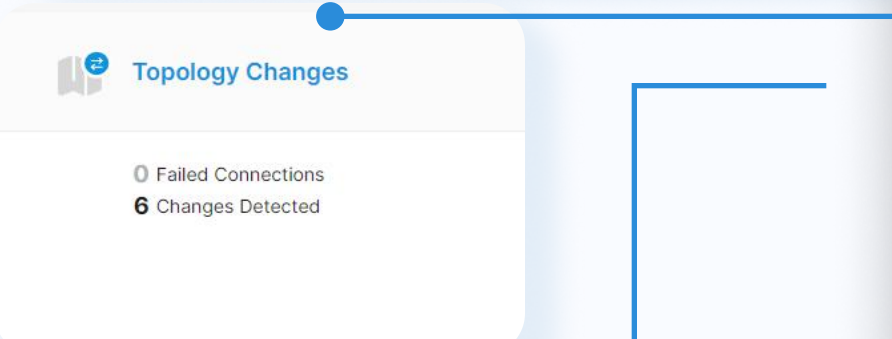
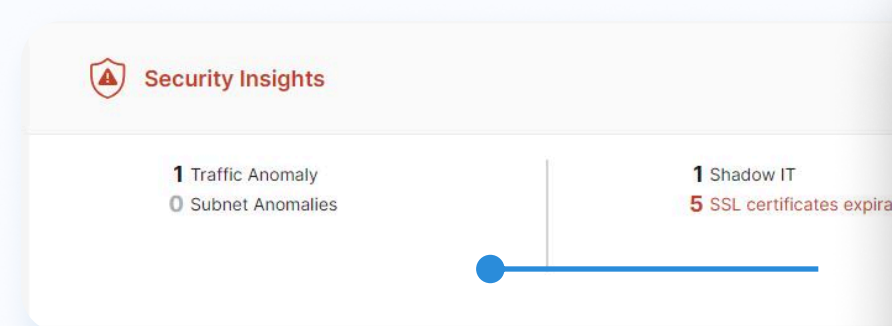
Michael Ciardullo
Infrastructure Manager
at DeVry University

Michael's experience with Faddom at DeVry University highlights how **real-time application mapping** can simplify IT operations, reduce complexity, and support strategic initiatives across a large-scale educational environment.

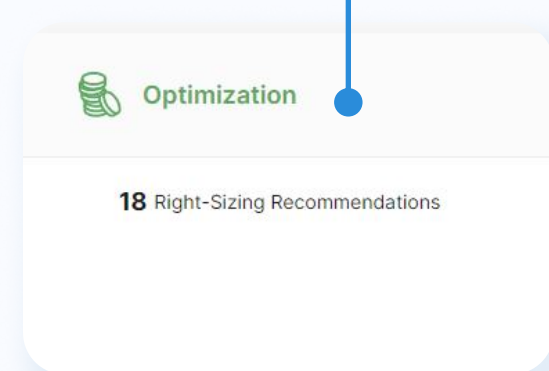
Own Your Topology Knowledge



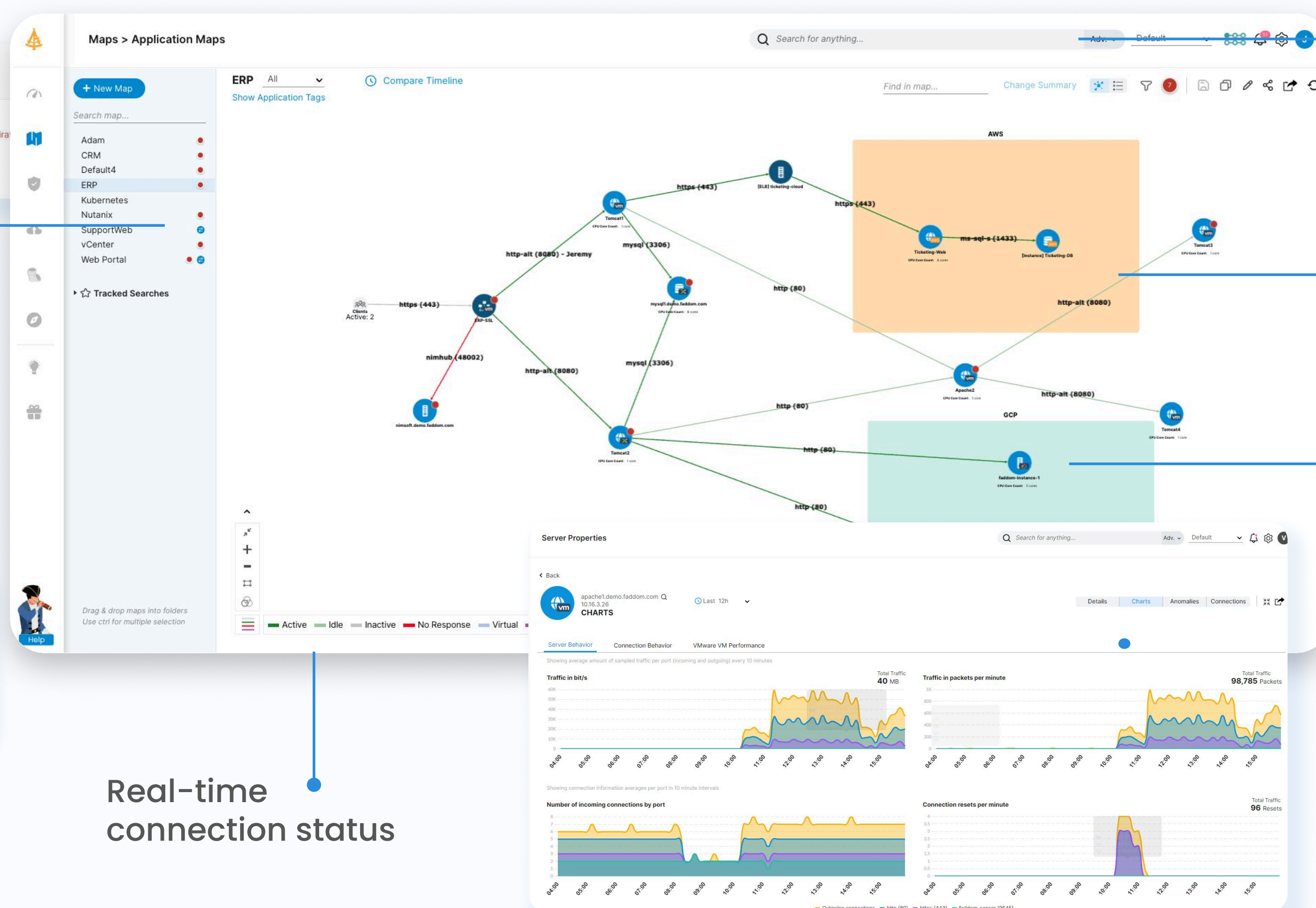
Map and secure your IT environment



Visualize topology changes automatically



Maximize IT efficiency



Real-time connection status

Search for anything

Build customized business application maps

Access detailed server properties

