

# Elevating IT Efficiency at DeVry University with Faddom



DeVry University, faced challenges with infrastructure visualization, understanding application dependencies, and detecting network changes promptly. The existing methods, including manual flow log lookups and local system tools, were proving inadequate. This is where Faddom's agentless mapping tools stepped in, transforming the IT management landscape at DeVry by offering clear, comprehensive, and efficient solutions.



**Faddom does a good job of application port mapping which helps us confirm application requirements. We use it to confirm our servers have the right connections**



**Michael Ciardullo**

Infrastructure Manager, Storage Engineer, DeVry University

## Benefits

### Rapid Deployment and Easy Setup:

Faddom's integration at DeVry was streamlined and user-friendly, taking only 60-120 minutes to deploy and showing results within a day. This quick time to value is crucial for educational institutions where IT resources are often stretched thin.

### User-Friendly Technology:

Faddom's platform is designed to be intuitive and easy to use. Its agentless nature not only simplifies deployment but also ensures robust security without the extra hassle. This combination of simplicity and affordability makes it an ideal solution for educational institutions like DeVry.

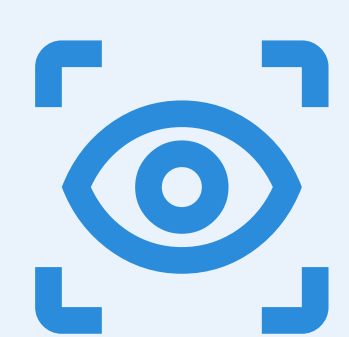


## Enhanced Visualization and Security:

With Faddom's detailed data flow visibility, DeVry's IT team, led by Michael, could now easily identify connections and monitor network changes. This not only improved their security posture by allowing for the quick detection of network pattern changes but also provided a clearer understanding of business application by visualizing servers dependencies.

## Clear Return on Investment:

The clarity provided by Faddom's mapping capabilities allowed DeVry to show business application and confirm that servers were correctly connected, significantly reducing risks and ensuring operational efficiency.



**1 Day**

Time to Value



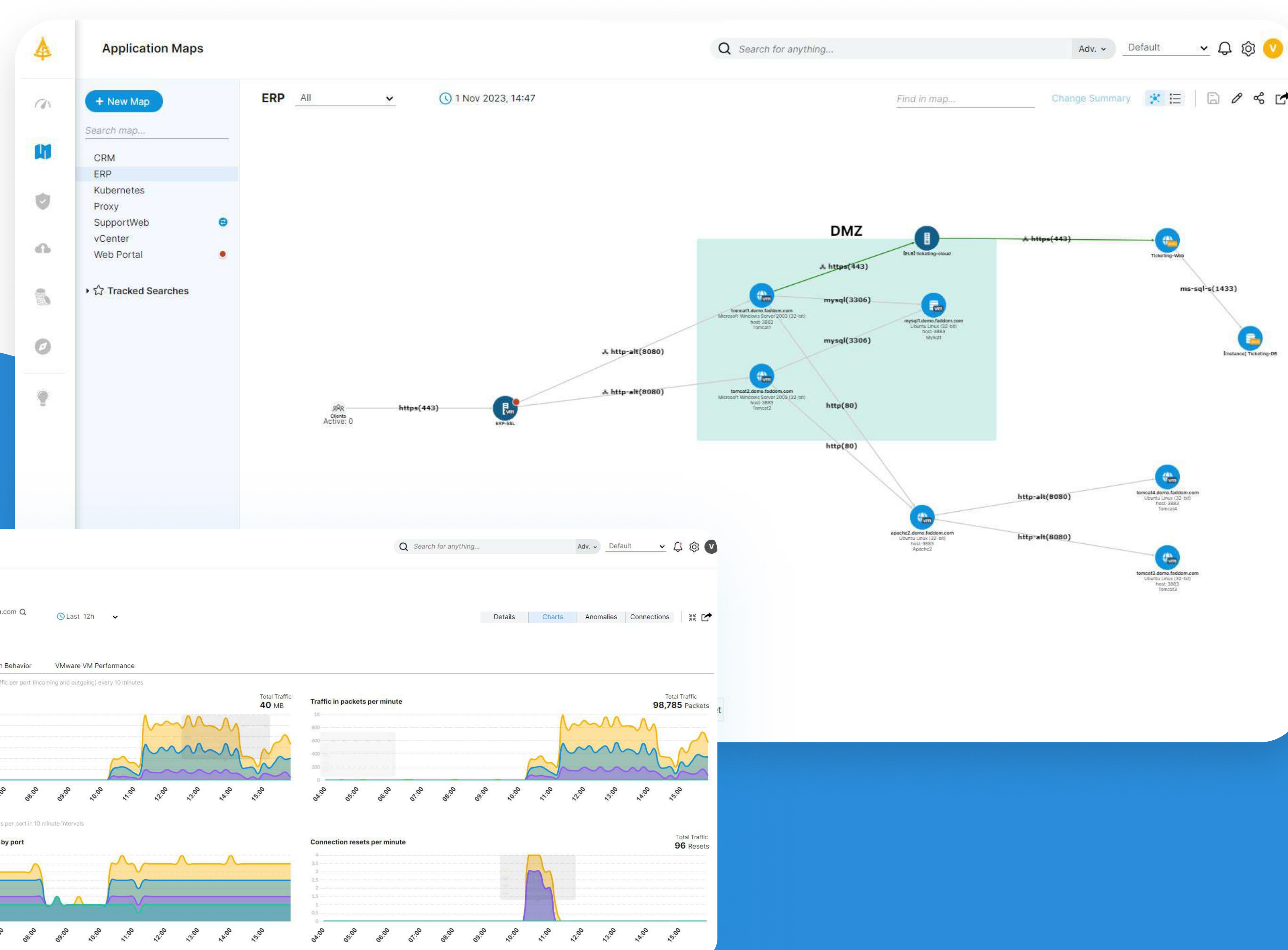
**Easy**

Effort to set-up



**Up to 60 mins**

Time to Deploy



Lightweight. No agents.  
No credentials. Works  
offline

Map all your  
dependencies  
within your network

**One person, one hour,  
all your servers mapped.**

Faddom provides agentless mapping of on-premises and cloud infrastructure, achieving comprehensive visibility within minutes. Our platform skillfully visualizes servers, business applications, and their interdependencies, significantly enhancing hybrid network visibility posture. Additionally, Faddom promptly detects external threats and vulnerabilities, enhancing network security and safeguarding your infrastructure.

For more information please visit us at: [faddom.com](https://faddom.com)

## PLATFORMS WE MAP

